

The background of the cover is an abstract composition of geometric shapes. On the left side, there is a series of vertical blue bars of varying heights, creating a stepped effect. The rest of the background is composed of large, angular shapes in shades of tan, light brown, and a deep blue, which together form a stylized, modern architectural or abstract design.

**MUSEUM OF LATIN AMERICAN ART**  
ANNUAL REPORT 2010

# TABLE OF CONTENTS

2010 LETTER FROM THE PRESIDENT

2

2010 EXHIBITION SCHEDULE

3 - 4

SELECTED ACQUISITIONS TO THE  
MOLAA PERMANENT COLLECTION 2010

5 - 6

2010 EVENT PROGRAMS / MOLAA MUSEUM STORE

7

2010 EDUCATION PROGRAMS

8

ANNUAL FUND 2010

9

FINANCIAL DATA / ATTENDANCE AND MEMBERSHIP

10

BOARD OF DIRECTORS AND STAFF 2010

11

# 2010 LETTER FROM THE PRESIDENT



Long Beach Business Journal photo by Thomas McConville.

2010 was a landmark year for the Museum of Latin American Art, one marked by transition and growth. With the passing of our founder, Doctor Robert Gumbiner, in 2009, we began to take steps towards becoming an independent, self-sustaining organization.

One of the first steps was appointing a Vice President of Curatorial Affairs/Chief Curator. We named Dr. Cecilia Fajardo-Hill, one of the most talented professionals in the international contemporary art world, to head up MOLAA's curatorial department.

Her innovative programming began with *The Sites of Latin American Abstraction*, an exhibition that featured the collection of Ella Fontanals-Cisneros and presented a brilliant revision of the story of mid-20th-century Abstraction in Latin America. Christopher Knight, chief art critic for the Los Angeles Times said that this was "the most compelling show in the Museum of Latin American Art's 13 year history." After MOLAA, the exhibition began an international tour to Spain and Germany.

In 2010, Mexico celebrated the 200th anniversary of its independence and the 100th anniversary of its revolution. To commemorate those historical milestones, MOLAA took part in Mexico 2010, a series of exciting events and landmark exhibitions that focused on the art and culture of Mexico.

We began with the exhibition *Manchuria: Peripheral Vision*, the first major exhibition in the United States of one of Mexico's pioneers of conceptual art, Felipe Ehrenberg. It was organized by the Museo de Arte Moderno (MAM) in Mexico City and curated by Fernando Llanos.

In June, performance artist Guillermo Gómez-Peña performed a solo multilingual piece called *Strange Democracy* that addressed U.S./Mexico border issues and immigration hysteria. We also opened a Project Room exhibition by Mariana Castillo Deball that focused on her critical exploration of Mexico's complex relationship with archaeology. In July and August, we presented our *Murals under the Stars* series, with Gregorio Luke, that highlighted the great Mexican muralists.

In September, *Siqueiros: Landscape Painter*, an extraordinary exhibition of over 70 works that examined the great Mexican muralist David Alfaro Siqueiros as a landscape painter opened. The exhibition, the first of its kind to be presented anywhere, was organized by the Museo de Arte Carrillo Gil, Mexico City in association with MOLAA and curated by Itala Schmelz and Alberto González.

In addition to these exciting and thought-provoking exhibitions, the events department put an extensive series of "after hours" programs in place while the programming efforts of our education department continued to receive accolades from the community.

Museums and other cultural organizations face many challenges, particularly with the current economic situation, but we have a "quality product" and as the only museum dedicated to modern and contemporary Latin American art in the United States, we are poised for even greater successes in the coming years.

With my warmest regards,

Stuart A. Ashman  
President & C.E.O.

# 2010 EXHIBITION SCHEDULE



## **Dialogues: Chapters of Latin American Art in the MOLAA Permanent Collection**

October 7, 2009 to July 3, 2010

Curator: Cecilia Fajardo-Hill

Arranged as an intersection of five simultaneous displays, this selection of works from the Permanent Collection offered a wide range of techniques; from the traditional to newer art forms; spanning from Abstraction, New Figuration to Postmodern expressions. Each display juxtaposed the old with the new, the traditional with the contemporary and experimental, to provoke new perspectives about the art.

Francisco Toledo, *Untitled / Sin título*, 1961, (detail) gouache on paper, 17 x 18 in. Robert Gumbiner Foundation Collection



## **Changing the Focus: Latin American Photography 1990-2005**

February 14 to May 2, 2010

Curator: Idurre Alonso

This exhibition was the first survey exhibition to be presented in the Los Angeles area of Latin American photography and photo-based art generated between 1990 and 2005. The exhibition showed the critical discourse of the photographic medium by portraying the works of artists that used a variety of languages, from more conceptual solutions to more traditional answers.

Alfredo Jaar (Chile, b. 1956) *The Eyes of Gutete Emerita / Los ojos de Gutete Emerita*, 1996, (detail) two Quadvision lightboxes with six black and white text transparencies and two color transparencies; four time cycles each lightbox: 26 x 26 x 6 in. each, time cycle: 45', 30', 15' and 1/5', pictured: Cycle 1 of 4, Solita Mishaan Collection, Miami



## PROJECT ROOM

### **Leandro Erlich. Jardín Perdido / Lost Garden**

February 14 to June 6, 2010

Curator: Cecilia Fajardo-Hill

Argentinean artist Leandro Erlich conceives of unique installations which recreate familiar spaces and structures that transform our perception of the real world. The work presented at MOLAA was *Lost Garden*, a triangular, enclosed construction which contained a garden. Even though we were aware of the limited dimensions of the architectural structure, when we looked inside, the garden was infinite in size.

*Lost Garden*, Installation view, 2009, (detail) photo: Oriol Tarridas



### **Manchuria: Peripheral Vision – A Felipe Ehrenberg Retrospective**

May 23 to August 15, 2010

Curator: Fernando Llanos

This exhibition focused on the multimedia works created by Felipe Ehrenberg, one of Mexico's most influential and iconoclastic contemporary artists. This retrospective exhibition, presented for the first time to audiences in the United States, demonstrated the importance of Ehrenberg's contribution to a post-modern aesthetic of conceptual, performance, installation and video art from the 1960s to the present.

Felipe Ehrenberg, *Codex Aeroscriptus Ehrenbergensis*, 1990 (detail), Libro objeto en dos ediciones, Nexus Press, Atlanta, GA. EUA; 1990



## PROJECT ROOM

### **Mariana Castillo Deball, *Between You and the Image of You that reaches Me***

June 17 to September 12, 2010

Curator: Cecilia Fajardo-Hill

This exhibition revolved around two figures in Aztec mythology: Coatlicue and Huitzilopochtli. Mexican artist Castillo Deball approached these mythological figures from the perspective of history and myth, taking into account their archaeological context. The artist drew a parallel between the mythological narrations of these pieces and their destiny as archaeological artifacts, and national identity.

Details of Coyolxauhqui paper sculpture (in progress) by Mariana Castillo Deball. Images ©Mariana Castillo Deball



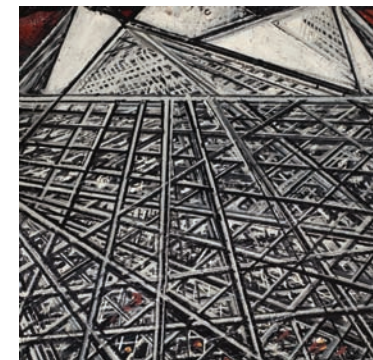
### **Four Views of the MOLAA Permanent Collection**

July 15, 2010 to January 9, 2011

Curator: Cecilia Fajardo-Hill

This selection of works represented different aspects of MOLAA's Collection and focused on sculpture, drawing, photography and prints, from the 1940s to the present day. The exhibition was divided into four sections: *Siqueiros: Sketches for the mural Muerte al invasor (Death to the Invader) and other Studies; Selections from the Mexican School 1945-1950; Highlights of Contemporary Cuban Art and Fluid Sculpture.*

David Alfaro Siqueiros (Mexico, b. 1896 – d. 1974) *Studies*, 1941-1942, (detail) 13 charcoal and conte crayon drawings on paper, leather and copper bound sketchbook, Gift of Frank Mainzer and Lonnie Zwerin, M.2008.018



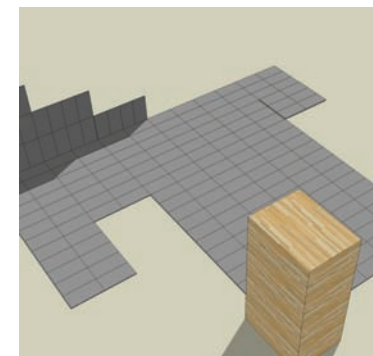
### **Siqueiros Paisajista / Siqueiros Landscape Painter**

September 12, 2010 to January 30, 2011

Curators: Itala Schmelz and Alberto González from Museo de Arte Carrillo Gil, Mexico

This exhibition, co-produced with the Museo de Arte Carrillo Gil in Mexico, revealed the renowned Mexican muralist David Alfaro Siqueiros as a major landscape painter. Featuring a selection of his most important landscape paintings and drawings, the exhibition showed Siqueiros' dynamic vision of futuristic cities, allegorical places and the environment.

David Alfaro Siqueiros (Mexico, 1896-1974) *Composición, trazos de las montañas y la ciudad / Composition, Drawings of the Mountains and the City*, 1973, (detail) Acrylic on masonite Acervo Instituto Nacional de Bellas Artes y Literatura /Sala de Arte Público Siqueiros, Mexico



## PROJECT ROOM

### **Jorge Méndez Blake, *All the Poetry Books***

September 16, 2010 to January 23, 2011

Curator: Shamim Momin from Los Angeles Nomadic Division (LAND)

Jorge Méndez Blake is a conceptual artist whose work concentrates on relationships between literature, art, and culture, with historical and geographical elements. For MOLAA's project, the artist did "poetry mapping" of the area, removing the complete section of poetry holdings from various Los Angeles and Long Beach libraries and crating them to their specific, accumulated volume in relationship to each library.

Image Credit: Goes in here



## THE COLLABORATIVE

### **Descartes, Gabriel Boils, Dream Addictive, Camilo Ontiveros and Jaime Ruiz Otis**

September 18, 2010 to January 23, 2011

Curator: Idurre Alonso

The artists who participated in this inaugural exhibition for The Collaborative gallery worked with discarded elements including industrial waste from factories, second-hand puzzles, used mattresses and solar energy. The artists explored the concept of the ready-made to create works of art that question different social issues, especially those related to the social and economic value of objects, consumerism and immigration.

Camilo Ontiveros (Mexico, b. 1978) *Untitled / Sin título*, 2008. Washing machine and rope, 48 x 48 in.

# SELECTED ACQUISITIONS TO THE MOLAA PERMANENT COLLECTION 2010



TANIA BRUGUERA (Cuba, b. 1968) *After Bruce Nauman*, 2000 (detail)

**GUILLERMO BERT** (Chile, b. 1959)  
*White Lies / Mentiras blancas*, 2006  
mixed media on wood with laser cutter  
Gift of the artist  
M.2010.002

**TANIA BRUGUERA** (Cuba, b. 1968)  
*After Bruce Nauman*, 2000  
cotton gloves, sugar, pigment on heavy paper  
Gift of Darrel Couturier, Couturier Gallery,  
Los Angeles, CA  
M.2010.025

**LEONIDAS CORREA** (Nicaragua, b. 1965)  
*Two Windows / Dos ventanas*, 2002  
C-print, ed. 4/6  
Gift of Remy Toledo, Remy Toledo  
Art Projects, New York  
M.2010.012

**MILAGROS DE LA TORRE** (Peru, b. 1965)  
*Que me suba a un taxi y me lleve a otro sitio,  
de la serie 'Temores' / That Having Taken a  
Taxi, I am Taken Somewhere Else*, from the  
series 'Temores', 2004  
archival digital print on cotton paper  
Gift of the artist  
M.2010.029

**MILAGROS DE LA TORRE** (Peru, b. 1965)  
*Que me toque una bala perdida*, de la serie  
'Temores' / *That a Lost Bullet Hits Me*, from  
the series 'Temores', 2004  
archival digital print on cotton paper  
Gift of the artist  
M.2010.028

**FELIPE EHRENBERG** (Mexico, b. 1943)  
in collaboration with: Richard Wearn (Conductor),  
and artist group (Interpreters), *Juan Gabriel  
and the Red Palm Tree-Partitura Visual/  
Visual Score*, 2010  
mixed media  
Gift of the artist  
M.2010.018

**FELIPE EHRENBERG** (Mexico, b. 1943)  
*Curiosamente estrepitoso artefacto para leer  
códices/ Curiously Clattery Codex Reading  
Contraption*, 2010  
Wood and paper  
Gift of the artist  
M.2010.019

**FELIPE EHRENBERG** (Mexico, b. 1943)  
*Detritus of the work "Xocoyotzin, the  
antepenultimate" performed by Felipe  
Ehrenberg at MOLAA on May 29, 2010*, 2010  
ink and blood on cloth  
Gift of the artist  
M.2010.02

**DARÍO ESCOBAR** (Guatemala, b. 1971)  
*Kukulcán*, 2009  
vulcanized rubber and steel  
Gift of Hugo Quinto, Ciudad de Guatemala  
M.2010.017

**MIGUEL FERNÁNDEZ** (Mexico, b. 1986)  
*Desbordes / Overflowings*, 2010  
Chromogenic prints (10)  
Gift of the artist  
M.2010.039



NATALIA IGUIÑIZ (Peru, b. 1973) *María Elena y Maribel* de la serie *La Otra*  
*María Elena and Maribel* from the series *The Other*, 2001 (detail)



CARLOS GARAICOA (Cuba, b. 1966) *Techo cielo*, 1995-2002

**CARLOS GARAICOA** (Cuba, b. 1966)  
*Techo cielo*, 1995-2002  
color photograph and Ilford flex  
polyester paper, ed. 3/5  
Gift of José Alonso, Alonso Art  
M.2010.014

**NELSON GARRIDO** (Venezuela, b.1952)  
*La crucifixión / The Crucifixion*, 1993  
C-print  
Gift of the artist  
M.2010.021

**NELSON GARRIDO** (Venezuela, b.1952)  
*El asesinato del niño Jesús / The  
Assassination of Baby Jesus*, 1993  
C-print  
Gift of the artist  
M.2010.022

**ALEJANDRO GONZALEZ** (Cuba, b.1974)  
*Una noche de placer*, c. 2002  
C-print (conceptual photograph), ed. 1/3  
Gift from the Collection of Geoffrey Beaumont  
M.2010.001

**NATALIA IGUIÑIZ** (Peru, b. 1973)  
*Charo y Rosario* de la serie *La Otra / Charo  
and Rosario* from the series *The Other*, 2001  
C-print  
Gift of the artist  
M.2010.006

**NATALIA IGUIÑIZ** (Peru, b. 1973)  
*María Andrea y Charo* de la serie *La Otra  
María Andrea and Charo* from the series  
*The Other*, 2001  
C-print  
Gift of the artist  
M.2010.007

**NATALIA IGUIÑIZ** (Peru, b. 1973)  
*María Elena y Maribel* de la serie *La Otra  
María Elena and Maribel* from the series  
*The Other*, 2001  
C-print  
Gift of the artist  
M.2010.004

**NATALIA IGUIÑIZ** (Peru, b. 1973)  
*Maruja y Mirna* de la serie *La Otra / Maruja  
and Mirna* from the series *The Other*, 2001  
C-print  
Gift of the artist  
M.2010.005

**ESTEBAN LISA** (Spain, 1895 – 1983)  
*Composició/n / Composition*, 1935-40  
oil on cardboard  
Gift of Fundación Esteban Lisa  
M.2010.03



**ESTEBAN LISA** (Spain, 1895 – 1983)  
*Juego de líneas y colores / Playing  
with Lines and Colors* 4/25/1955  
oil on paper  
Gift of Fundación Esteban Lisa  
M.2010.033

**ESTEBAN LISA** (Spain, 1895 – 1983)  
*Juego de líneas y colores / Playing  
with Lines and Colors* 7/28/1967  
oil on paper  
Gift of Fundación Esteban Lisa  
M.2010.034

**MARCO MAGGI** (Uruguay, b. 1957)  
*Infinitesimal*, 2009  
pencil on clayboard  
Museum purchase with funds provided by  
the Pinta Museum Acquisition Program  
and the MOLAA Collectors Circle  
M.2010.035

**LEO MATIZ** (Colombia, 1917-1998)  
*Sin título (Frida Kahlo) /  
Untitled (Frida Kahlo)*, 1943  
black and white photograph  
Gift of Cecilia Fajardo-Hill  
M.2010.013

**LUIS MOLINA-PANTIN** (Switzerland, b. 1969)  
*Castillo Marroquin, An informal study of the  
Hybrid Architecture, Vol. 1 – The Narco – Ar-  
chitecture and Its Contributions to the com-  
munity (Cali-Bogotá, Colombia)*, 2004-2005  
C-print  
M.2010.023

**CARLOS MONTES DE OCA** (Cuba, b. 1968)  
*Zen sentido*, 2007  
C-print, ed. 1/3  
Gift of Barbara Jakobson  
M.2010.003

**CARLOS MOTTA** (Colombia, b. 1978)  
*When if ever, does one draw a line under the  
horrors of history in the interest of truth and  
reconciliation?*, 2009  
screen prints (Portfolio of 10 prints) and booklet  
Museum purchase with funds provided by  
the Pinta Museum Acquisition Program and  
the MOLAA Collectors Circle  
M.2010.036.a-j

**JULIO ANTONIO PÉREZ** (Cuba, b. 1950)  
*Poignant Realities XV /  
Realidades punzantes, XV*, 1995  
monotype  
Gift of the artist  
M.2010.008

**MANUEL PIÑA** (Cuba, b. 1958)  
*De construcciones y utopías / On  
Constructions and Utopias*, 1999-2001  
17 gelatin silver prints  
Gift of the artist  
M.2010.024.a-q

**OFELIA RODRÍGUEZ** (Colombia, b. 1956)  
*Paisaje con dos hemisferios flotando / Land-  
scape with Two Hemispheres Floating*, 2006  
mixed media on canvas  
Gift of Ofelia Rodríguez  
M.2010.015

**OFELIA RODRÍGUEZ** (Colombia, b. 1956)  
*Realidad suspendida en el aire /  
Mid air Reality*, 1992  
mixed media on canvas  
Gift of Ofelia Rodríguez  
M.2010.016

**RICARDO RODRÍGUEZ** (Puerto Rico, b. 1983)  
*Attempt to Construct from the series  
Trapped Between*, 2010  
archival pigment print and rope  
Gift of the artist  
M.2010.038

**ANA SACERDOTE** (Italy, b. 1925)  
*Sin título / Untitled*, 1954  
tempera on paper  
Museum purchase with funds provided by  
the Pinta Museum Acquisition Program  
and the MOLAA Collectors Circle  
M.2010.037

**DORIS SALCEDO** (Colombia, b. 1958)  
*Shibboleth I-IV*, 2007  
4 archival pigment inkjet prints on  
Hahnemühle Photo Rag  
Gift of Carolyn Alexander, New York  
M.2010.040.a-c

**GUSTAVO TABARES** (Uruguay, b. 1968)  
*Mick*, 2008  
video, DVD  
Gift of the artist  
M.2010.030

**JOAQUÍN TORRES-GARCÍA** (Uruguay, 1874 – 1949)  
*Composició/n constructiva /  
Constructivist Composition*, 1934  
ink on paper  
Gift of Jorge Virgili in memory of his brother  
Salvador and all those who have suffered  
from AIDS  
M.2010.031

**VÍCTOR HUGO ZAYAS** (Mexico, b. 1961)  
*Three Lines/ Tres líneas*, 2007  
hot-rolled steel sculpture  
Gift of the artist  
M.2010.011

**VÍCTOR HUGO ZAYAS** (Mexico, b. 1961)  
*Astrophysiological Structure Study No. 31  
(Original Concept Drawing)*, 1995  
ink on paper  
Gift of the artist  
M.2010.026



**VÍCTOR HUGO ZAYAS** (Mexico, b. 1961)  
*Astrophysiological Structure No. 11  
(Self-Portrait)*, 2010  
painted metal  
Gift of the artist  
M.2010.027

## 2010 EVENT PROGRAMS / MOLAA MUSEUM STORE



### EN LA NOCHE

Every third Thursday of the month MOLAA had an evening of music, art, film and dancing. Every En la Noche kicked off with a DJ, a complimentary spirit tasting and docent led tours. Guests were then invited to enjoy live performances by local artists and musicians.

An average of 377 guests attended each night.

### MURALS UNDER THE STARS

These monumental outdoor multimedia presentations returned for their 11th year to MOLAA. For 2010, Gregorio Luke highlighted *The Best of Murals Under the Stars, Diego Rivera and Frida Kahlo* and *Mexico: 200 years*. The presentations were in celebration of Mexico's Bicentennial. Guests also had the opportunity to enjoy live music and buy merchandise from vendors who came directly from Mexico at the pre-event *fiesta*.

The three part series had a total audience of 2,495 guests.

### CINE MOLAA

Cine MOLAA was a new program for 2010; a monthly evening devoted solely to film. The program showcased documentaries as well as cult classics and contemporary titles such as: *Maquilapolis, Riverside, Los Ladrones Viejos, Que Tan Lejos, El Topo* and *Un Chien Andalou*, among others.

Filmmakers, directors and producers donated their screening fees and offered support for each film showcase.

A total of 2,446 people attended CINE MOLAA.

### NIGHT IN

This program was a cultural evening that included dinner and entertainment. It was designed to educate guests and provide them a complete authentic experience; a taste of the culture of Mexico.

There were 151 people at this event.

### ARCHITECTURE AND DESIGN LECTURES

In 2010 MOLAA offered a series of architecture and design lectures. *Contagious Risk* was presented by Michel Rojkind, art conservator Rosa Lowinger lectured about Cuban Modernism and Mitzi March Mogul spoke about Cuban Art Deco. The lectures not only examined architecture and design, but the ideas, style, social, cultural and political context of each genre.

A total of 120 people attended all three lectures.

### OPERA CONCERTS

MOLAA collaborated with Hispanics for L.A. Opera and L.A. Opera to present two concerts at the Museum. The first concert in May was the L.A. Opera Young Artist Concert and featured ten Domingo-Thornton young artists. The second was a sneak peek of *Il Postino* by composer Daniel Catan. Catan, shared the process of creating his opera which premiered in the Fall at L.A. Opera.

The total number of attendance for both concerts was 320 people.

## 2010 EDUCATION PROGRAMS

In 2010, the Education Department offered free weekly programming via Target Free Sundays @ MOLAA, as well as revenue-generating programs. Revenue-generating programs served over 5,000 visitors and included School Tours and Art Workshops, Campamento del Arte, Descubre el Arte, Abejitas Art Club and Buen Provecho. These programs brought in over \$40,000 in revenue, excluding grants from corporate and governmental agencies and foundations. The Education Department served almost 7,000 students in 2010.



### CAMPAMENTO DEL ARTE

Sixty-five children enrolled in Campamento del Arte, a dual-immersion, interdisciplinary summer arts camp in 2010. Campamento del Arte featured fine arts, culinary arts, martial arts, ballet folklorico and theatre workshops, in addition to weekly field trips to El Dorado Park. Workshops were taught by local artists with the support of 20 teen counselors from our student volunteer program.



### TARGET FREE SUNDAYS@MOLAA

Target Free Sundays took place every Sunday in 2010 and served over 18,000 visitors. Programming on those days included hands-on workshops and tours of the galleries. Eight Sundays were also dedicated to festivals. Festivals featured regular programming plus live performances, storytelling, lectures, panels and food and crafts vendors. 2010 Festivals included the Afro-Latino Festival, Women's Day, Children's Earth Day, Cinco de Mayo, Peruvian Independence Day, Hispanic Heritage, Dia de los Muertos and Winter in Latin America. Dia de los Muertos alone, drew over 1,200 visitors from throughout Southern California.

### SCHOOL TOURS & WORKSHOPS

Tours and Workshops are designed to fulfill California Visual Arts Standards and include a hands-on component taught by a teaching artist. Over 5,000 students participated in School Tours and Workshops in 2010. Verizon sponsored fourteen tour/workshop and transportation packages that served approximately 725 students. Participating schools represented Long Beach, Orange County and the Los Angeles and Inland Empire school districts.

### ABEJITAS ART CLUB

The Abejitas Art Club was a pilot program geared towards toddlers. The aim of the Abejitas Art Club was to provide an artistic environment for parents with 3-5 year old children. Unfortunately, the Abejitas Art Club did not draw a regular audience and was cancelled after four sessions.

## RETAIL OPERATIONS-MUSEUM STORE

In 2010, the MOLAA Museum Store focused on increasing its contemporary and modern products. Jewelry was our highest selling category, with designers such as Creative Brazil and Consuelo Campos amongst the best sellers.

Throughout the year, the store held eight different events. It held six Latin American Destination weekends which focused on books and merchandise from specific highlighted countries including trunk shows with artisans from the featured countries; and a book discussion/reading on Argentinean writer Juan Luis Borges. The Store also hosted renowned chef Diana Kennedy for a book signing and Q&A in November.

The total gross revenue for the MOLAA Museum Store retail sales in 2010 was \$93,098. The total direct expenses were \$71,749 resulting in a net income of \$21,749.



## \$1,000,000+

Robert Gumbiner Foundation

## \$100,000+

ABC 7

Virginia Bell Jordan Estate

The Getty Foundation

Target Corporation

Telemundo

Verizon Wireless

Wells House Hospice

## \$50,000

Bank of America Foundation

James Irvine Foundation

Ovation

## \$25,000+

Arts Council for Long Beach

City of Long Beach

Los Angeles Magazine

Wallis Foundation

Wells Fargo

## \$10,000+

Aetna Foundation, Inc.

Mr. Phil Appleby and Mrs. Pat Paris

Ms. Virginia Bell Jordan

Dr. Robert Braun MD &

Ms. Joan Friedman PhD

Mr. and Mrs. Marc Brown

City of Long Beach Redevelopment

Agency

County of Los Angeles

Mr. and Mrs. Mario Cordero

Mr. and Mrs. Tim Degani

Mr. and Mrs. Mike Deovlet

The District Weekly

Mr. William Escalera and

Mr. Francisco George

Mr. and Mrs. Ewel Grossberg

Mr. Burke Gumbiner and Ms. Susan Ware

Mrs. Christine Cronin-Hurst and

Mr. Mark Hurst

The Audrey and Sydney Irmis Charitable Foundation

KCRW 89.9 FM

LA Weekly

La Opinion

Los Angeles County Arts Commission

Kenneth T. & Eileen L. Norris Foundation

Talbert Medical Group

Union Bank

Walt Disney Company

Dr. and Mrs. Hector Ziperovich

## \$5,000+

AeroMexico

Avia Hotel

Josephine S. Gumbiner Foundation

Hotel Maya

Lyon Communities

Pasadena Art Alliance

Dr. Lidia Rubinstein

Sony Pictures Entertainment

Southern California Edison

Mr. Richard Townsend

and Mr. Heber Siqueiros

Mr. Michael Weber and

Mrs. Frances Spivy-Weber

## \$2,500

Ms. Edwina Brandon

Bess J. Hodges Foundation

Keesal, Young & Logan

Mr. and Mrs. John Link MD

Mr. and Mrs. Robert Marcus

MOLAA Docent Guild

Mr. and Mrs. Bob Nugent

Saltfineart

Southern California Edison - Rosemead

Whole Foods Market

## \$1,000+

Adorno, Yoss, Alvarado and Smith

Alvarado Smith

Artillery

Mrs. Carla Arzente and

Mr. George Arzente

Ms. Kathleen Barrutia

Mr. and Mrs. Edward Clark

Ms. Wanda Lee Graves and

Mr. Stephen Duscha

Mr. and Mrs. Russell Faucett

Mr. and Mrs. Herb Feitler

Mr. and Mrs. Rico Garcia

Dr. Mildred Garcia

The Rosalinde and

Arthur Gilbert Foundation

Mr. and Mrs. Vincent Lee

Dr. Frances Grover

Ms. Marsha Jeffer

Ms. Mina Martinez

Mr. and Mrs. S. A. Moore

Mrs. Ann Myers and Mr. Bob Myers

Mr. John O. Otterness

Mr. Jaime Pagan-Amador

Mr. Otto R. Penarredonda

Ms. Regina Mundekis and

Mr. Vincent Pollmeier

Mrs. Lupe Padilla-Robb and Mr. Alan Robb

Mr. Ivan Rodriguez

Ms. Karyllye Schwartze

Mrs. Jean Stark and Mr. Gene Stark

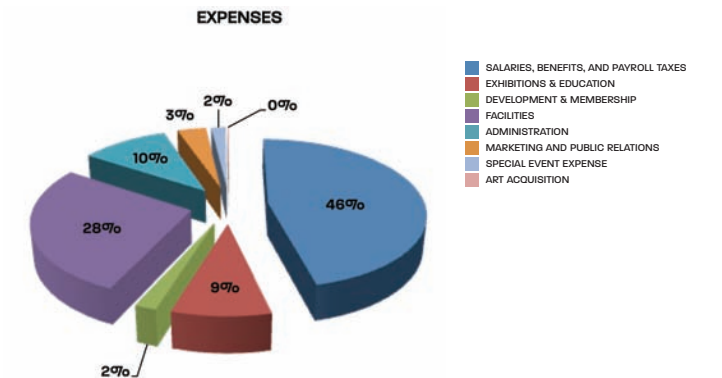
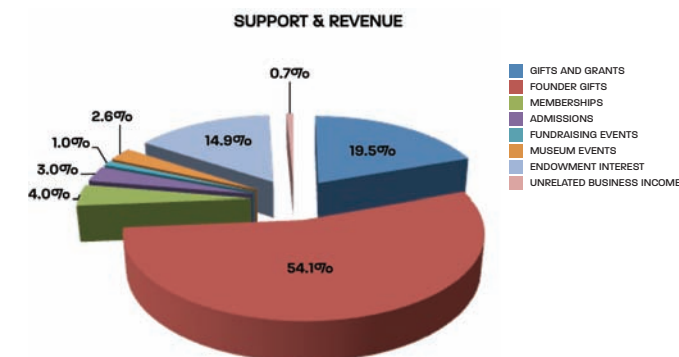
Ms. Katerina Mateju and

Mr. George Vosahlo

Mr. Martin Wing

Dr. Richard and Mrs. Rebecca Zapanta

	UNRESTRICTED	TEMPORARILY RESTRICTED	PERMANENTLY RESTRICTED	TOTAL
<b>SUPPORT AND REVENUE</b>				
<b>CONTRIBUTIONS</b>				
GIFTS AND GRANTS	\$752,305	\$379,702		\$1,132,007
FOUNDER GIFTS	\$2,086,886	\$100,000	\$4,166,667	\$6,353,553
MEMBERSHIPS	\$155,986			\$155,986
ADMISSIONS	\$117,386			\$117,386
FUNDRAISING EVENTS	\$36,959			\$36,959
MUSEUM EVENTS	\$101,573			\$101,573
ENDOWMENT INTEREST	\$ -	\$575,913	\$53,346	\$629,259
UNRELATED BUSINESS INCOME	\$27,685			\$27,685
NET ASSETS RELEASED FROM RESTRICTION	\$689,400	\$(689,400)		
TOTAL SUPPORT AND REVENUES	\$3,968,180	\$366,215	\$4,220,013	\$8,554,408
<b>OPERATING EXPENSES</b>				
SALARIES, BENEFITS, AND PAYROLL TAXES	\$2,124,288			\$2,124,288
EXHIBITIONS & EDUCATION	\$396,249			\$396,249
DEVELOPMENT & MEMBERSHIP	\$88,092			\$88,092
FACILITIES	\$1,262,810			\$1,262,810
ADMINISTRATION	\$479,780			\$479,780
MARKETING AND PUBLIC RELATIONS	\$158,152			\$158,152
SPECIAL EVENT EXPENSE	\$78,279			\$78,279
ART ACQUISITION	\$7,830			\$7,830
TOTAL EXPENSES	\$4,595,480			\$4,595,480
CHANGE IN NET ASSETS	\$(627,300)	\$366,215	\$4,220,013	\$3,958,928
NET ASSETS - BEGINNING OF YEAR	\$17,339,596	\$123,842	\$13,678,531	\$31,141,969
NET ASSETS - END OF YEAR	\$16,712,296	\$490,057	\$17,898,544	\$35,100,897



## 2010 MEMBERSHIP

CATEGORY	MEMBERSHIPS	REVENUE
DIRECTOR'S CIRCLE	22	\$21,490
ASSOCIATE	13	\$6,400
COLLEAGUE	52	\$12,915
FRIENDS	219	\$27,264
FAMILY	283	\$22,606
BASIC	556	\$33,308
SENIOR	367	\$20,704
STUDENT	203	\$5,051
TEACHER	204	\$5,082
	1,919	\$154,821
MOLAA TRAVEL	2	\$50
SMITHSONIAN AFFILIATE	5	\$110
	7	\$160

## ATTENDANCE

ADMISSIONS	33,606
EVENTS SALES	9,093
EDUCATION	5,290
FUNDRAISING	275
MUSEUM EVENTS	5,656
MEMBERSHIP EVENTS	1,063
TOTAL ATTENDANCE	54,983

## BOARD OF DIRECTORS AND STAFF 2010

---

### FOUNDER

Dr. Robert Gumbiner (1923-2009)

### BOARD OF DIRECTORS

#### EXECUTIVE BOARD

Mike Deovlet, Co-Chairman  
Burke Gumbiner, Co-Chairman  
Phil Appleby, Secretary and Treasurer

#### DIRECTORS

Gina Adams  
William Escalera  
Ron Morgan  
Hector Ziporovich, M.D.  
Robert Braun, M.D.  
Marc Brown  
Mario Cordero  
Christine Cronin-Hurst  
Tim Degani

### ADMINISTRATION

Richard P. Townsend, President and C.E.O.  
Irma Arvizu, Executive Assistant  
Mirella Romero, Associate VP of Human Resources

### FINANCE

Christopher Gordon, VP of Projects and Finance  
Tim Buckingham, AP/AR Manager  
Melinda Lim, Accounting

### DEVELOPMENT

Edwina Brandon, VP of External Affairs  
Kathryn Adams, Associate VP of Membership, Foundation and Government Relations  
Wendy Celaya, Associate VP of Corporate Relations and Major Gifts  
Lisa Nashua, Associate VP of Foundation and Government Relations  
Erika De La Parra, Individual Giving Manager  
Marcy Rodriguez, Membership Manager  
Dorothea Franke, Development Associate  
Leonardo Bueno, Development Assistant

### COMMUNICATIONS

Susan Golden, VP of Communications  
Martha Guzman, Associate VP of Communications  
Steve Vladimiroff, Graphics Art Director  
Adrian Covarrubias, Graphic Designer

### MUSEUM EVENTS

Eva Melgarejo, Associate VP of Events  
Denisse Galvan, Museum Events Coordinator  
Christina Cruz, Facility Rentals Coordinator  
Marco Guerra, Event Sales Manager

### CURATORIAL AFFAIRS

Cecilia Fajardo-Hill, VP of Curatorial Affairs/ Chief Curator  
Cynthia MacMullin, Associate VP of Curatorial Affairs / Senior Curator  
Idurre Alonso, Curator

Michele Cairella Fillmore, Collections Manager  
Selene Preciado, Curatorial Assistant  
Nathan Garst, Preparator  
Emily Willmann, Collections Assistant  
Susan Beckley, Volunteer Manager

### EDUCATION

Gabriela Martinez, Associate VP of Education  
Ruben Lopez, Education Assistant  
Tehja Omaya, Education Assistant

### RETAIL

Christina Taylor-Godwin, VP of Retail and Events  
Vanessa Castillo, Store Manager  
Kara Stephenson, Assistant Store Manager

### OPERATIONS

Lee Gumbiner, VP of Operations  
Octavio Olmos, Operations Administrator

### FACILITIES AND SECURITY

Randy Collins, Facilities Manager  
Andrew Brown, Maintenance  
Chukwunyere Ebegbulem, Maintenance  
Paul Luna, Maintenance  
Maria Jimenez, Housekeeping  
Anthony Hampton, Security Manager  
Jose Rizo, Security Supervisor  
Michael Anderson, Security Guard  
Dewayne Feenstra, Security Guard  
Mitchell Rodriguez, Security Guard  
James Seleznoff, Security Guard  
Brian Thornton, Security Guard  
Edison Vinueza, Security Guard

### VISITOR SERVICES

Jason Stabile, Visitor Services Manager  
Mario Calzada, Visitor Services Associate  
Helen Charles, Visitor Services Associate  
Carina Clemente, Visitor Services Associate  
Jennifer Sales, Visitor Services Associate